

samen
werken



samen
leren

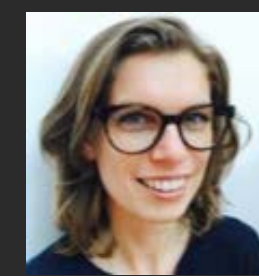
Collaboration in research

Alice Schippers, Kim van den Bogaard, Henriëtte Sandvoort,
Sofie Sergeant, Elsbeth Taminiau

Dr. Alice Schippers , drs. Sofie Sergeant
(Disability Studies in the Netherlands)



Henriëtte Sandvoort
(LFB advocacy organisation for people with ID, the Netherlands)



Prof. dr. Petri Embregts, dr. Elsbeth Taminiau,
Drs. Kim van den Bogaard
(Tranzo, Tilburg University, the Netherlands)

Prof. dr. Geert van Hove
(Vumc Metamedica, the Netherlands)



Participation

- United Nations Convention on the Rights of Persons with Disabilities (UNCRPD):
“(...) full and effective participation and inclusion in society”
- Inclusive research: representation of the views and experiences of people with ID in policy, implementation and research projects
→ knowledge is developed and shared by people with and without ID (Walmsley & Johnson, 2003)
- Different ways of participation in inclusive research projects → the main focus is collaboration between people with and without ID (Nierse & Abma, 2011).



Participation

- Feelings of being able to help others (Flood, Bennett, & Melsome, 2012)
 - Being valued (Bell & Mortimer, 2013; Nind & Vinha, 2014)
 - Feelings of confidence and increased self-esteem (Flood et al., 2012; García-Iriarte, O'Brien, & Chadwick, 2014)
 - Enrichment of the research process and its outcomes (Frankena, Naaldenberg, Cardol, Linehan, & Van Schrojestein Lantman-De Valk, 2015; Puyalto, Pallisera, Fullana, & Vilà, 2016; Woelders, Abma, Visser, & Schipper, 2015)
- Increased attention to participation of people with ID in research, e.g., funding bodies



Collaboration between people with and without ID

Dutch Government initiated the National Program Disabled People

Aim:

The development, sharing and application of knowledge to improve the quality of care for people with intellectual disabilities, multiple disabilities or acquired brain injury

Result:

People with a disability participate more independently and with more right of say in society

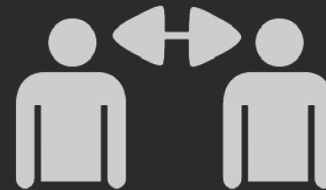


Collaboration between people with and without ID

Collaboration between people with and without ID as a requirement to get funding from the National Program

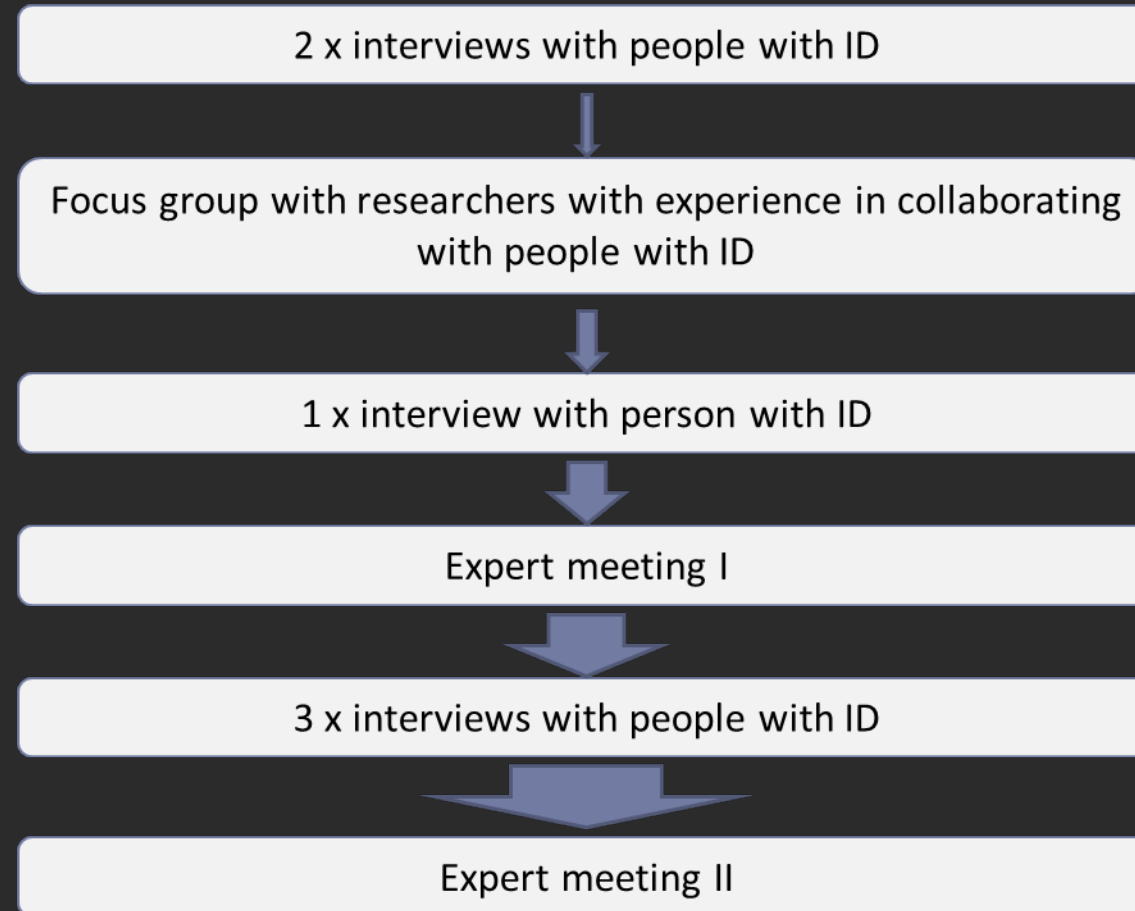
First → how to achieve participation of people with ID in (research) projects?

Funding to examine what people with and without ID consider important competencies to work together



Created by Anton Håkanson
from Noun Project

Methods

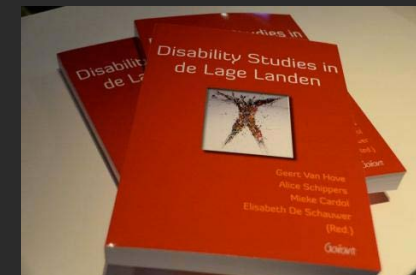


The background features a faint, light blue botanical illustration of a plant with leaves and a central stem, positioned on the left side. On the right side, there are two yellow sticky notes, one larger than the other, partially overlapping the background.

Collaboration



Creative Assignment – Drawing Lab



On the road together – Training & coaching

- Communication, Creativity
- All the way inclusive
- Belonging
- Respect for who I am, follow my tempo
- Interested in my knowledge & talents
- Ok with messyness



Collaboration between people with and without ID

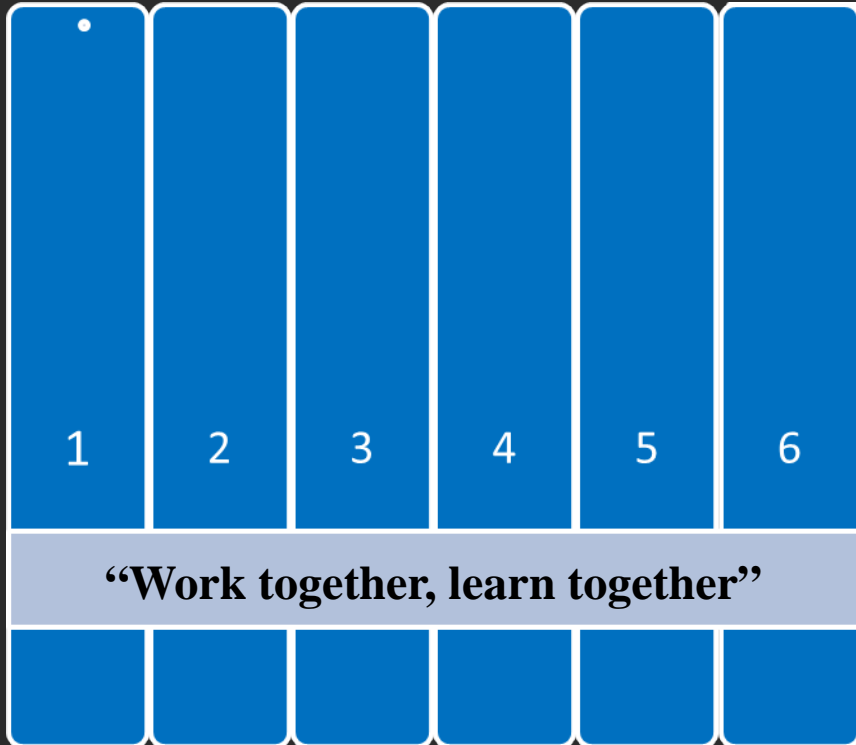
Competenties considered important for people with and without ID:

- Building a mutual relationship
- Communication
- Achieving a collaboration in which everyone involved can contribute
- Being aware of skills and developmental needs
- Being aware of impact

→ Establishing collaborative relationships between people with and without ID requires the commitment of both parties

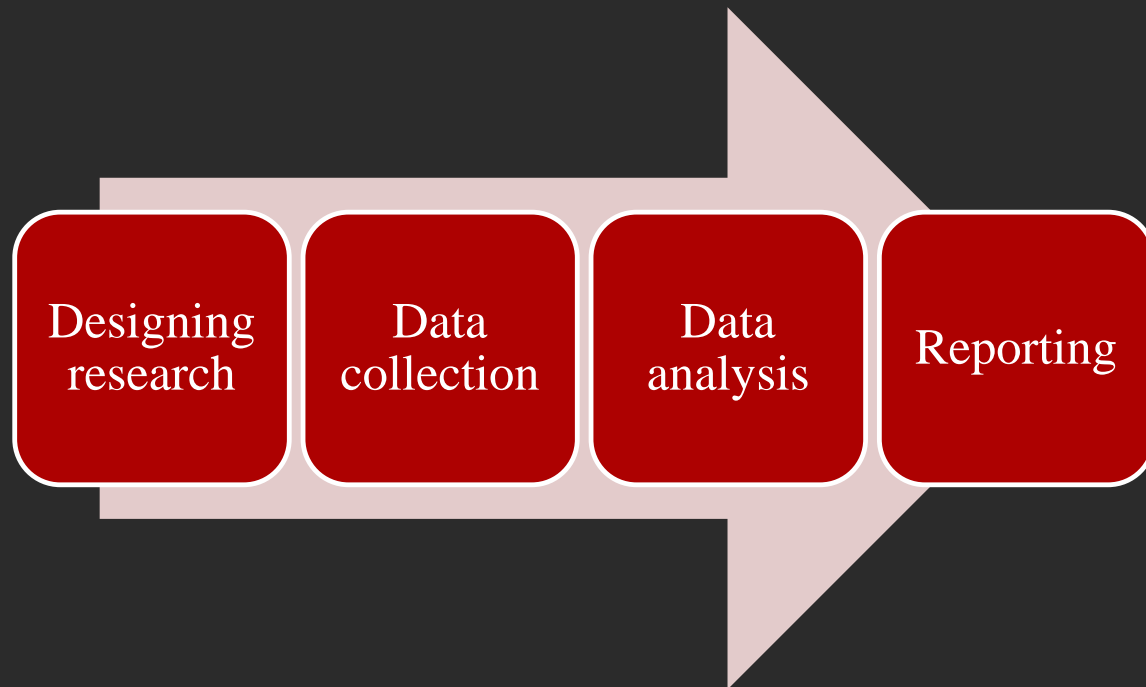
(Embregts, Taminau, Heerkens, Schippers, & van Hove, accepted)

Collaboration between people with and without ID



- A) Training and coaching of projectmembers
- B) Funding to examine the effects of collaboration between people with and without ID
 - I) Funded projects
 - II) Projectmembers
 - III) National Program

“Work together, learn together”



Part B

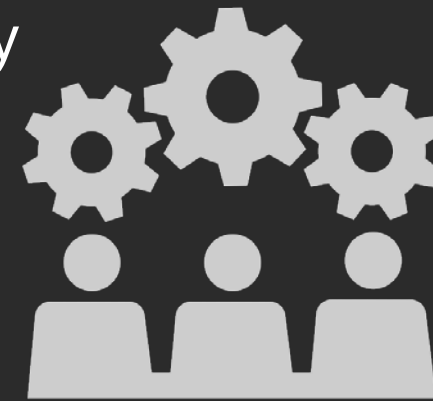
- Following:
Project leader
Researcher without disability
Researcher with disability
- Research is linked to research phase A

“Work together, learn together”

Examining participation and inclusion in funded projects (4 year period):

- Work activities and motivation to collaborate
- Job networks
- Perception of participation and inclusion of people with ID in society

→ Recommendations to further participation and inclusion of people with ID



Created by Gerald Wildmoser
from Noun Project

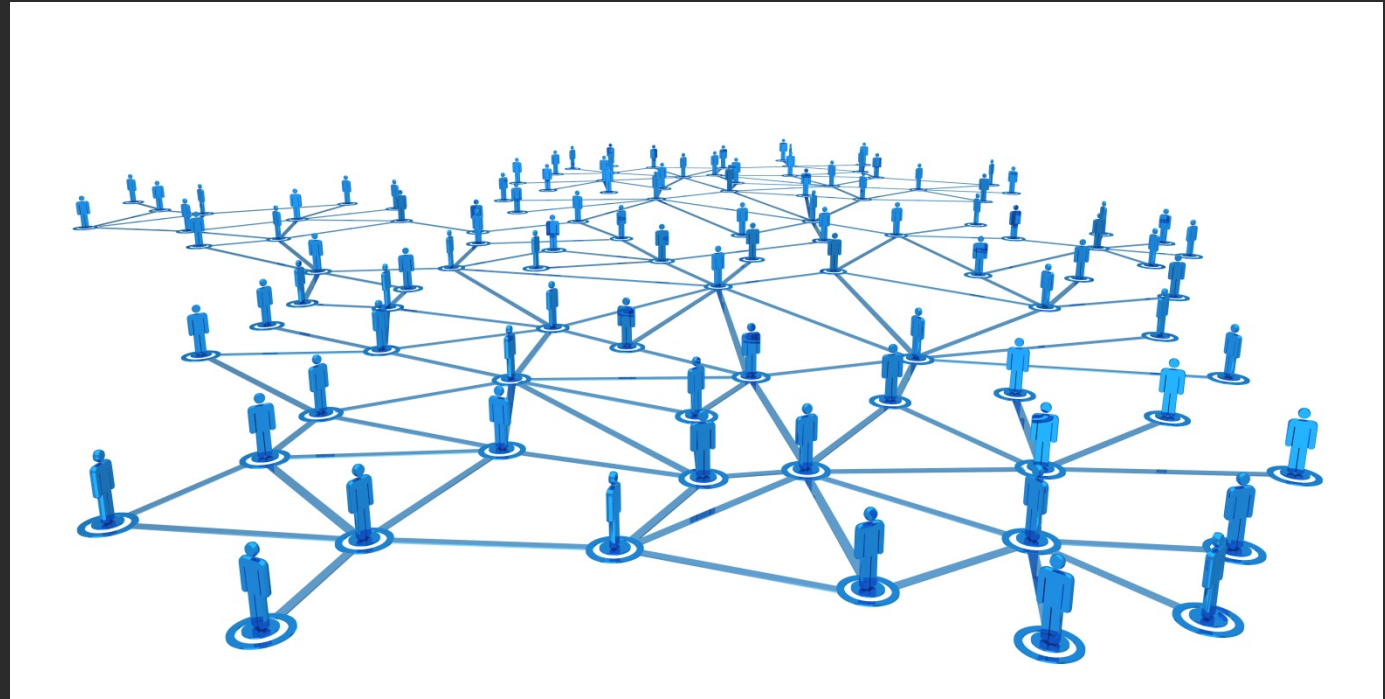
Workactivities and motivation to collaborate



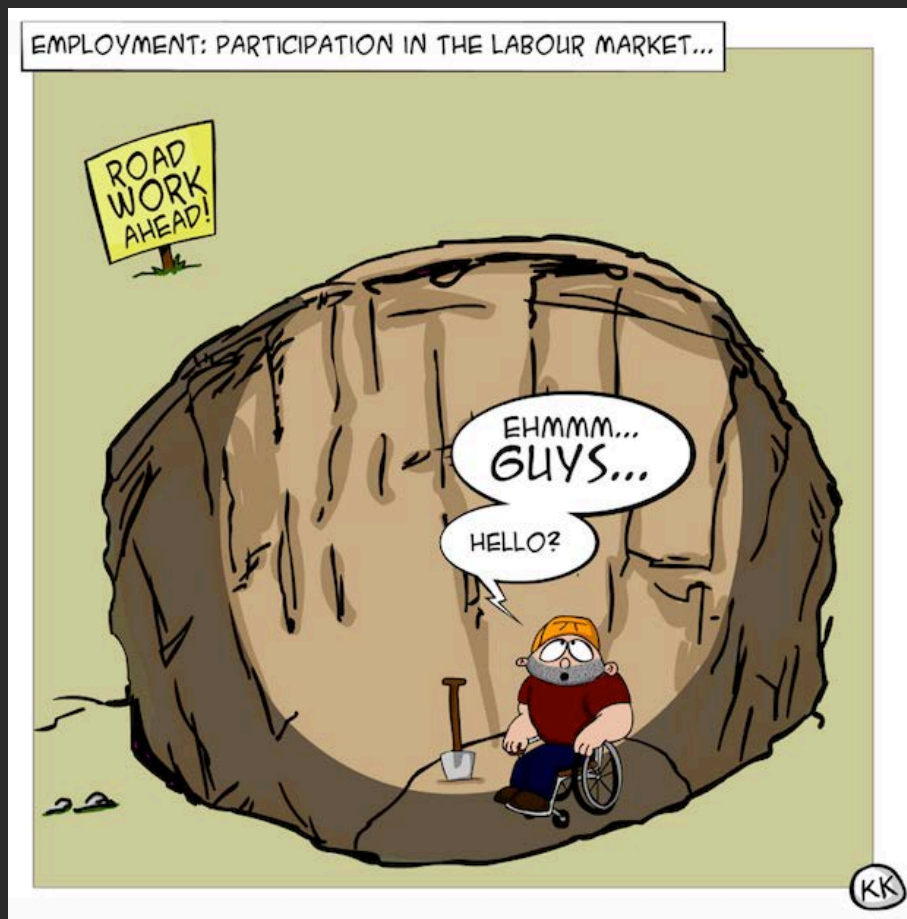
Job networks

Characteristics of job networks:

- Size
- Characteristics of persons in the networks



Perception of participation and inclusion of people with ID in society



Observation of

- Documents (e.g., research application)
- Team meetings (e.g., role of co-researcher, programm)

Thank you for your attention

Are there any questions?



sofie.sergeant@disabilitystudies.nl
k.j.h.m.vdnbogaard@uvt.nl
h.sandvoort@lfb.nu