

Yeah, because they live in Tilburg together [...]. I got the feeling that they, sometimes, forget me.. [R2]

Searching for belonging: how people with intellectual disabilities experience participation and inclusion in their neighborhood

Vera van Druten - Junior Researcher, University of Humanistic studies
Nienke Smulders - MST-MID Therapist, Prisma

Searching for belonging: so what?

- Community living for people with ID is hot!
- However: it definitely doesn't come naturally
- ***How do we know what to do when they cannot give their voice?***
- Using innovative ways to know more about the experiences of these persons

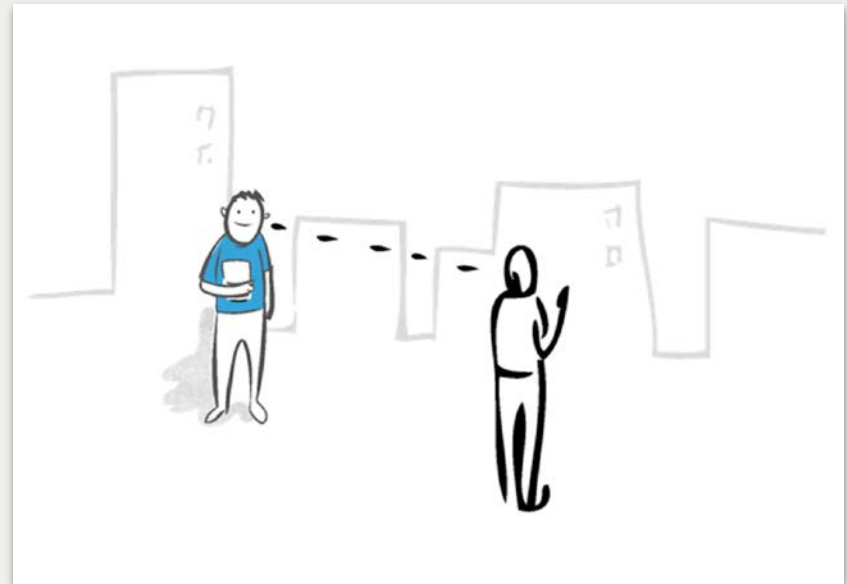
Research study 1: Objective

Student master project

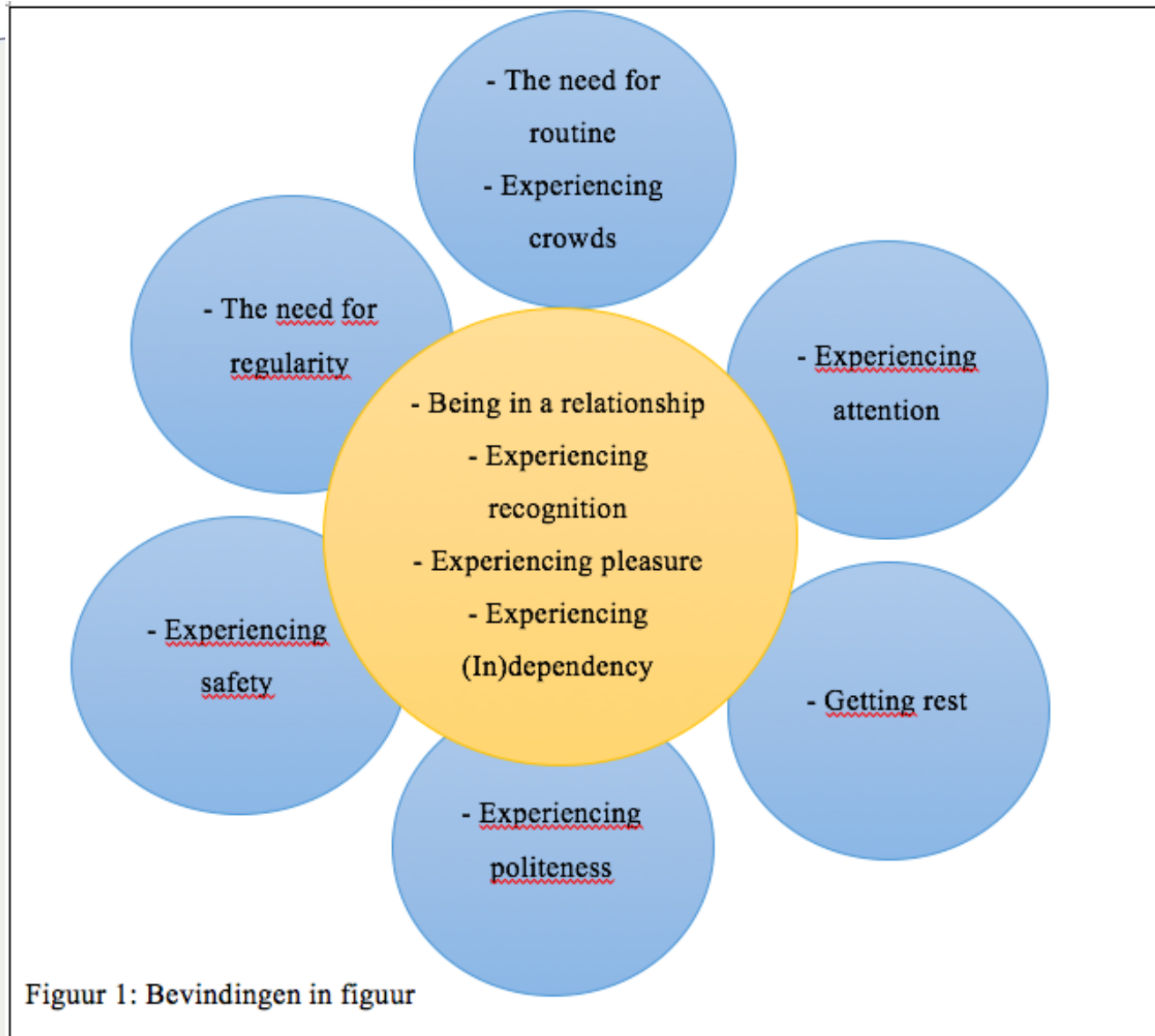
What are the lived experiences from people with an intellectual disability working at community centre The Red Carpet and what do these experiences mean for a care-ethical perspective on participation?

Research study 1: Method

- Interpretative phenomenological analysis
- Shadowing
- Six participants



Research study 1: Findings



Figuur 1: Bevindingen in figuur

Research study 2: Objective

Getting insight in the lived experience of **youngsters with mild to borderline intellectual disability living in the community** and their feelings about participation.



Research study 2: What's new?

Responsive evaluation approach (N=6)

Shadowing

Narrative (themes)

Photovoice

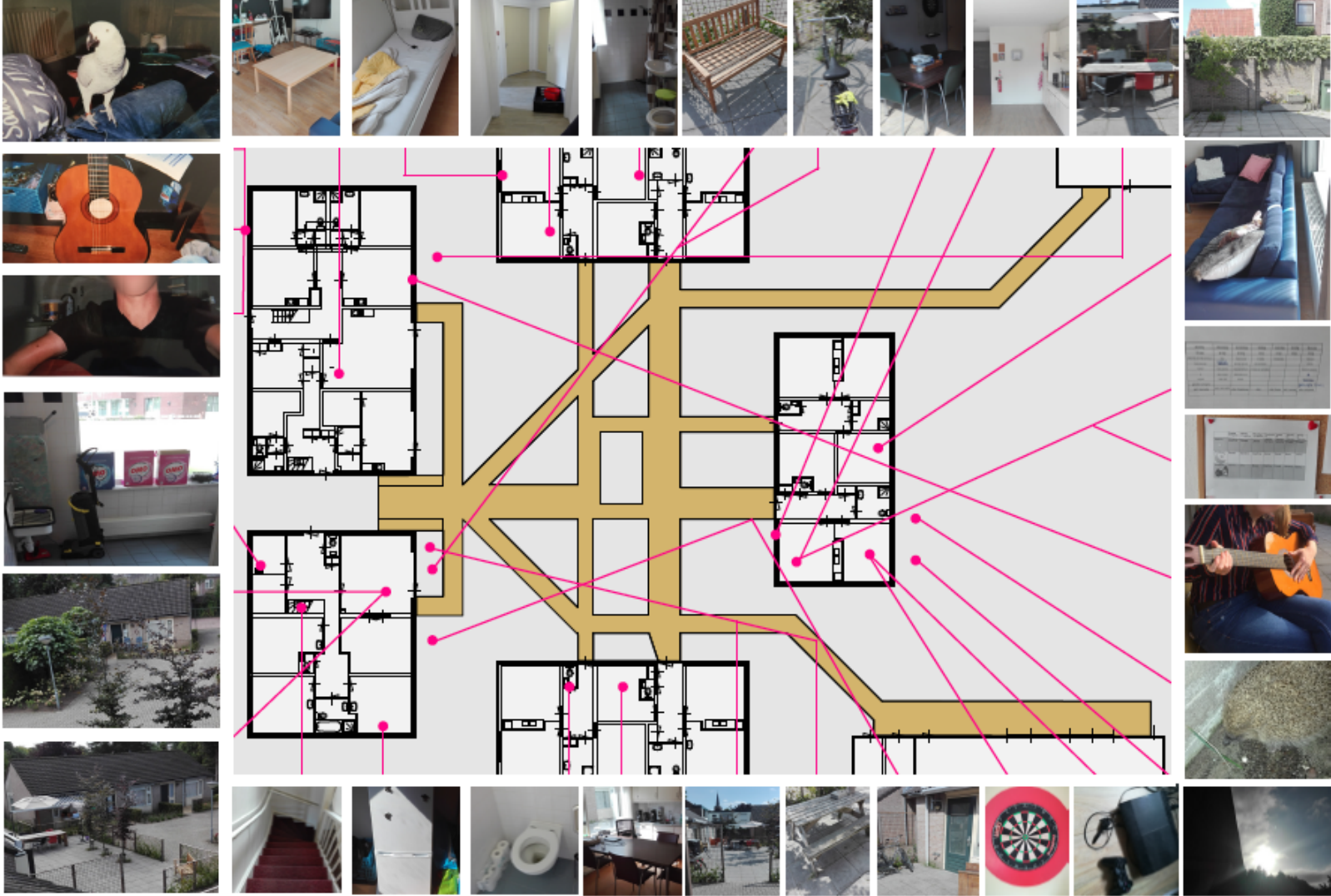
Trajectories

Research study 2: Results (themes)

Main themes concerning the lived experiences

- Feeling displaced
- Taking distance
- Being independent

Research study 2: Results (trajectory)



Our take home messages

- Nobody is fully independent from others
- Life sustaining web, feeling displaced
- Community living: not a goal on its own!

Interesting to read

- Abma, T.A., & Widdershoven, G.A.M. (2006).** Responsieve methodologie: Interactief onderzoek in de praktijk. Den Haag: Lemma.
- Hergenrath, K.C., Rhodes, S.D., Cowan, C.A., Bardhoshi, G., & Pula, S. (2009).** Photovoice as community-based participatory research: A qualitative review. *American Journal of Health Behavior*, 33, 686-698.
- Jurkowski, J.M., & Paul-Ward, A. (2007).** Photovoice with vulnerable populations: addressing disparities in health promotion among people with intellectual disabilities. *Health Promotion Practice*, 8, 358-365.
- Novak, A.A., Stancliffe, R.J., McCarron, M., & McCallion, P. (2013).** Social inclusion and community participation of individuals with intellectual/developmental disabilities. *Intellectual and Developmental Disabilities*, 51(5), 360-375. doi: 10.1352/1934-9556-51.5.360
- Overmars-Marx, T., Thomése, F., Moonen, X. (2016).** Photovoice in research involving people with intellectual disabilities: A guided photovoice approach as an alternative. *Journal of Applied Research in Intellectual Disabilities*, 1-13. doi: 10.1111/jar.12329
- Snell, M.E., Luckasson, R., Borthwick-Duffy, W.E., Bradley, V., Buntinx, W.H.E., Coulter, D.L., Yeager, M.H. (2009).** Characteristics and needs of people with intellectual disability who have higher IQs. *Intellectual and Developmental Disabilities*, 47(3), 220-233. doi: 10.1352/1934-9556-47.3.220
- Timmerman, G., Visse, M., & Vosman, F. (2014).** Vóór, met en dóór de buurt: een zorgzaam Pannenhoeft voor iedereen. Utrecht: Universiteit voor Humanistiek. UN General Assembly (2007). Convention on the Rights of Persons with Disabilities : resolution / adopted by the General Assembly, A/RES/61/106 C.F.R. (2007).
- Visse, M.A., Abma, T.A. & Widdershoven, G.A.M. (2015).** Practising political care ethics: can responsive evaluation foster democratic care? *Ethics and Social Welfare*. doi: 10.1080/17496535.2015.1005550
- Verdonschot, M.M.L., De Witte, L.P., Reichrath, E., Buntinx, W.H.E., & Curfs, L.M.G. (2009).** Community participation of people with an intellectual disability: a review of empirical findings. *Journal of Intellectual Disability Research*, 53, 303-318. doi: 10.1111/j.1365-2788.2008.01144.x

Thank you for your attention!

Do you want to know more? Please contact Rimke Griffioen:
rgriffioen@prismanet.nl

Research team

- dr. Inge van Nistelrooij (assistant professor, UvH)
- Vera van Druten MSc. (junior researcher UvH)
- Ilse van Noordenne MSc. (junior researcher UvH)
- drs. Rimke Griffioen (policy advisor & care ethicist, Prisma)
- Nienke Smulders MSc. (MST-MID therapist, Prisma)
- Gisela Verduijn (advisor, municipality Loon op Zand)

